

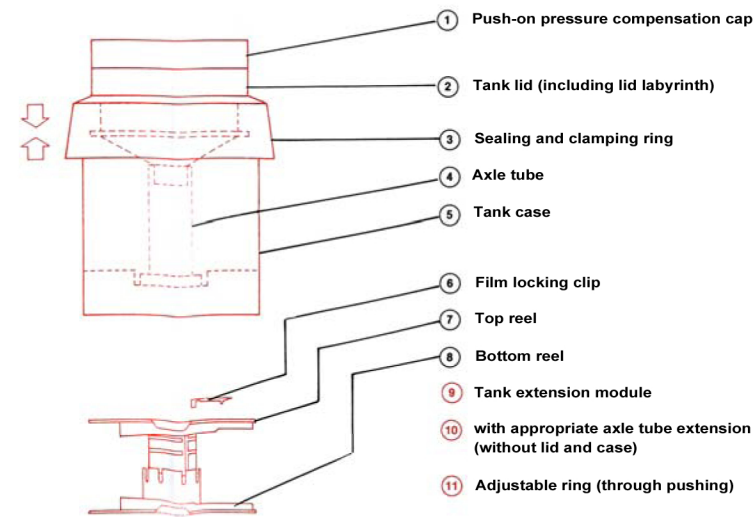
JOBOTank System 2500 GB

Inversion Tank System 2500

This system is built for professional use and consists of two tanks **2540** and **2520** and two types of reels for 35mm/120 Films and sheet-film up to 4x5".

The Multitank 2520 can be used for inversion and rotation agitation in combination with JOB0 Roller item no. 1509, **for manual agitation at ambient temperature.**

All tanks consist of tank base (5), a centre tube, which holds the reels (4) a tank lid (2) with light trap, and push-down sealing ring (3), for fast locking and a cap with pressure-compensating membrane (1).



No tank comes with reel.

The Tank **2540** only accepts one reel 2502 for processing one film 35mm.

For Tank **2520** two different types of reels are available. Duo-Set 2502 and Shetfilm Set 2509n

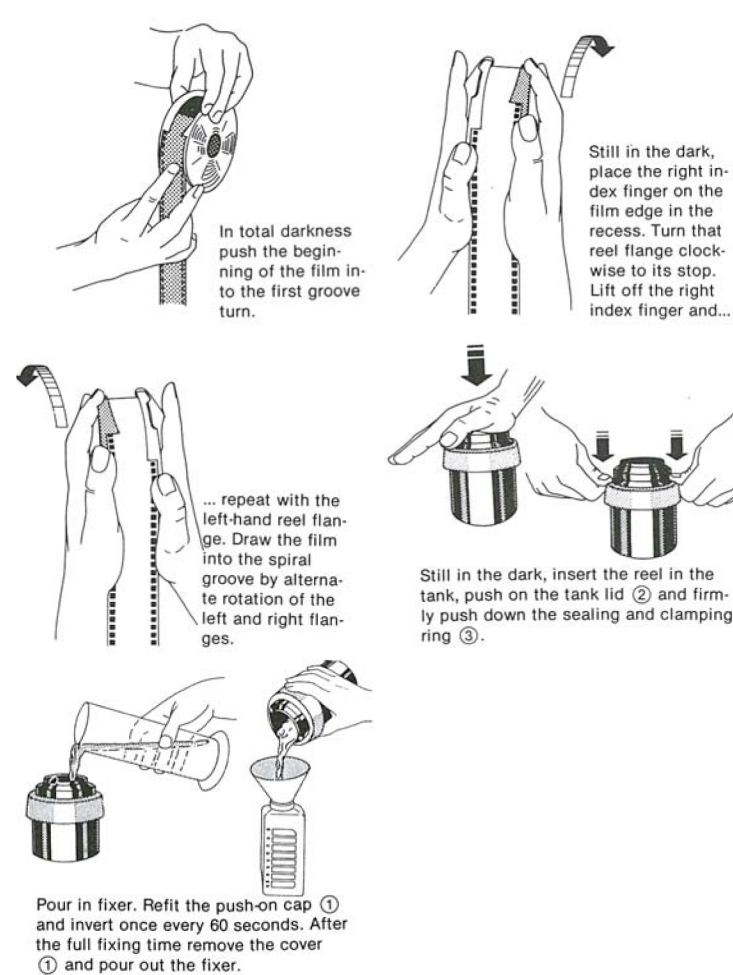
Processing

For processing time and temperature we refer to the chemical manufacturers recommendation.

Minimum Solutions:

For inversion agitation		For rotation agitation	
1 film 35mm	775 ml	with reel 2502	270 ml
2 films 35mm	1.275 ml	with reel 2502	270 ml
1 film R 120	1.275 ml	with reel 2502	270 ml
2 films R 120	1.275 ml	with reel 2502	270 ml
6 sheetfilms 6x9	900 ml	with sheetfilm reel 2509n	270 ml
6 sheetfilms 9x12	1.200 ml	with sheetfilm reel 2509n	270 ml
6 sheetfilms 4x5"	1.500 ml	with sheetfilm reel 2509n	270 ml

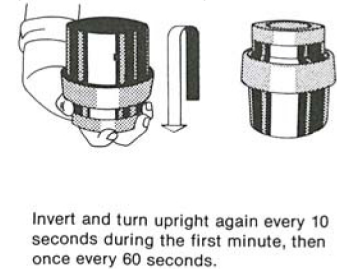
Loading the reels with film has to be done in complete darkness. The loaded reels, fixed on the center tube, are then closed in the tank with the light tight lid. Working solutions are filled in and poured out through the centre of the lid., which is covered for processing with the red membrane cap.



The red cap seals the lid. It has a membrane, which before pushing on the lid, is pressed inwardly. It springs up, when during processing air pressure is built up in the tank and by this way will prevent leaking.



Agitation during filmprocessing is done by inverting the tank and putting pack afterwards in position.

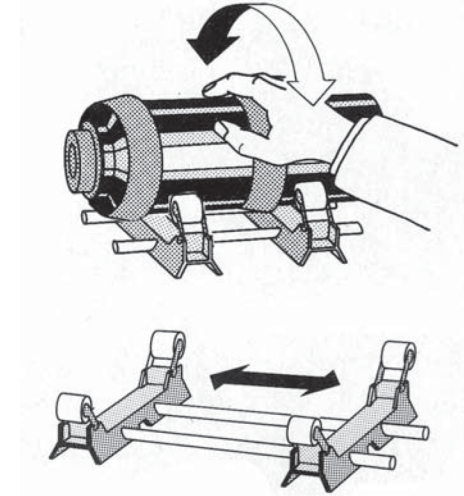


The Multitank 2520 additionally can be rotated manually on JOB0 Roller item no. 1509.

Rotation processing with JOB0 Roller item no. 1509.

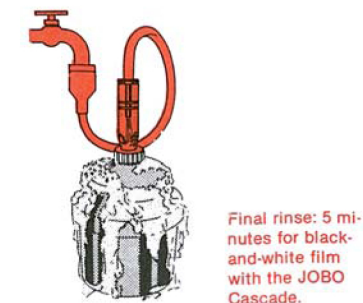
Place the roller on an even and firm horizontal table. Suitable for all JOB0-Tanks of System 1500 and JOB0 Multitank 2520.

Place developing tank horizontally on the two rolls and keep moving the tank forth and back by hand. Make sure, that the rotation will cover one complete turn. Processing will be at ambient temperature.

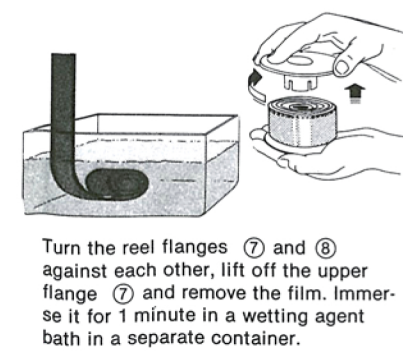


With JOB0 Filmwasher Cascade item nr. 3350.

Fast and secure washing will be completed after 5 minutes washing time. The amount of washwater can be set on a scale. The water is forced through the centre tube to the ground and whirl upward along the emulsions with a mixture of air bubbles. A universal adaptor fits most water fashets.



After final wash carefully bath the film in a separate vessel in wetting agent.



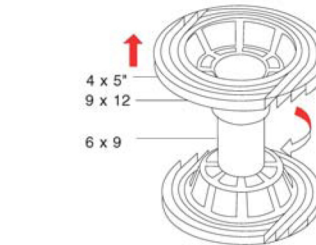
Duo-Set 2502 for 1 film 35mm and 2 films 120.

The film separating clip (6) allows secure processing of two films one behind the other of the formats 110, 120 or 126.

Lift up the separating clip before loading the reel. After the first film is advanced to the stop of the centre of the reel, press separating clip down, it will be a barrier in the gauge and prevent the second film to slide over the first one.

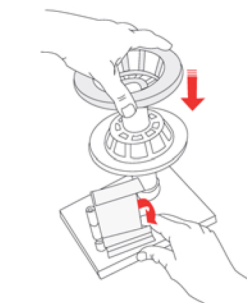
The **Sheetfilm reel 2509n** will accept up to 6 films 6x9cm, 9x12cm, 4x5".

By turning the top half of the reel clockwise past a detent, and pulling it up the reel can be adjusted to the required film width. Lock it in place by turning the top half counter-clockwise past the detent again.



Slide the film into the reel with the emulsion side facing the centre. Start with the inner-most slot.

With each sheetfilm reel 2509n come black plastic holders, they are only needed for formats 9x12 and 4x5". Always insert the holders, even if only one or two sheets are being processed. The holders are positioned among the three pins on each half of the reel. They prevent the film from falling out and optimize the processing quality.



Make sure, the films are in their correct position behind the inserted holders.

